

LCMS Report

Sample Information

LCMS

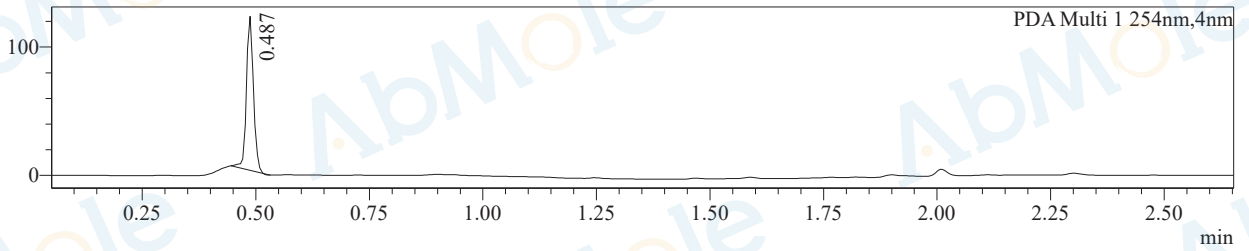
Acquired by : System Administrator
Sample Name : Scopolamine hydrobromide-05
Method File : B 5%-95%-P-new - 2.6min.lcm

Date Acquired : 2021/6/29 12:14:11
Injection Volume : 5
Vial : 51

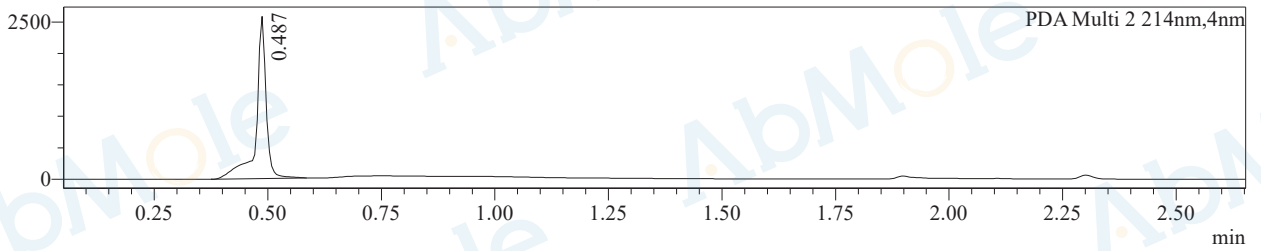
Column : Waters SunFire C18 50*4.6mm 5um 2.000ml/min 2.6min
Pump A : 0.1% FA and 10% ACN in H2O
Pump B : 0.1% FA and 10% H2O in ACN

Chromatogram

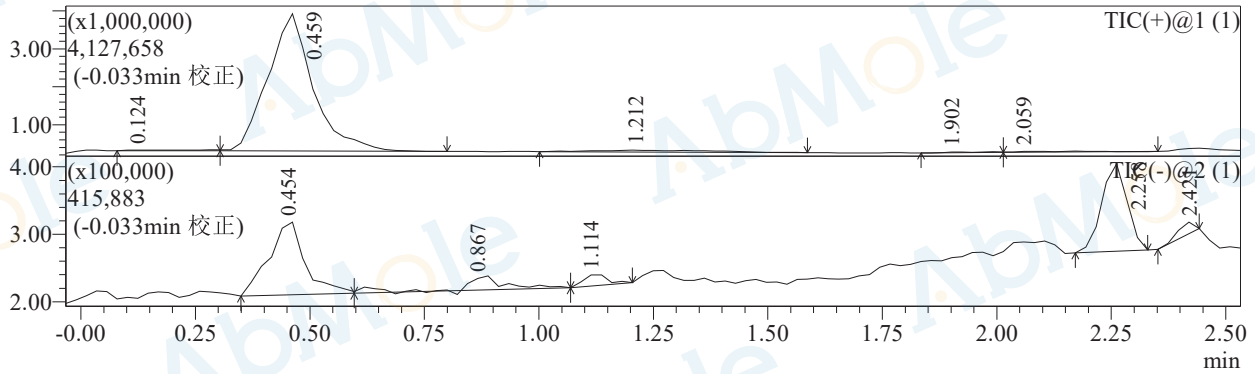
mAU



mAU



段号1



Integration Results for DAD

PDA Ch1 254nm

Peak#	Ret. Time	Height	Area	Area%
1	0.487	120168	126847	100.000
总计		120168	126847	100.000

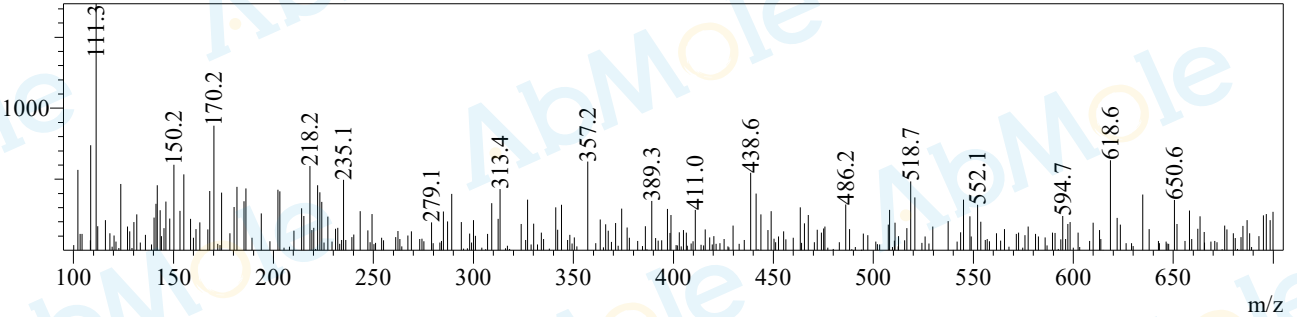
PDA Ch2 214nm

Peak#	Ret. Time	Height	Area	Area%
1	0.487	2579560	3916491	100.000

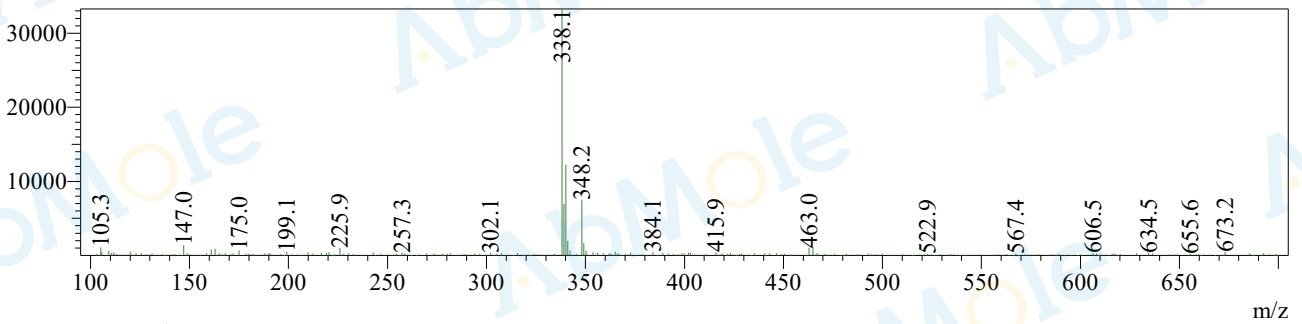
Peak#	Ret. Time	Height	Area	Area%
总计		2579560	3916491	100.000

Mass Spectrum

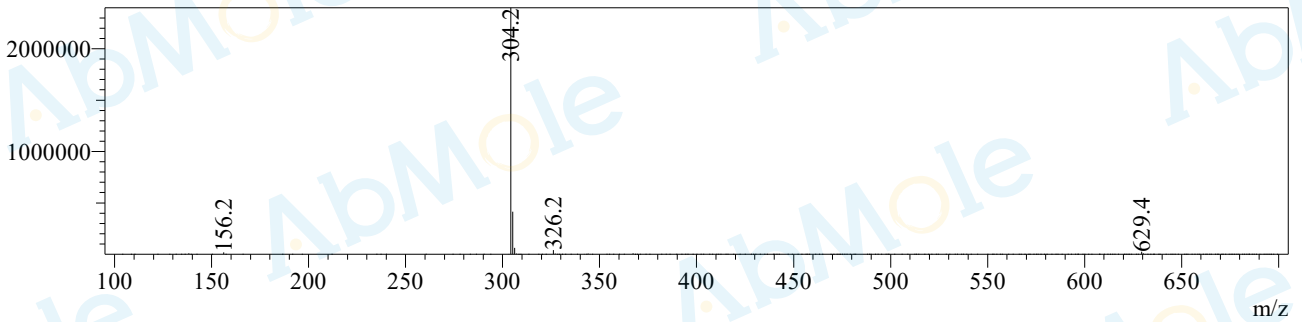
Rt=0.124min 正



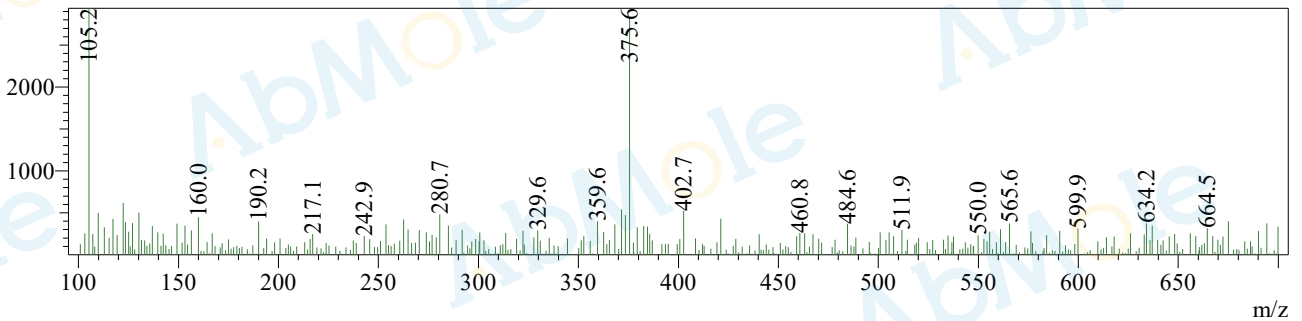
Rt=0.445min 负



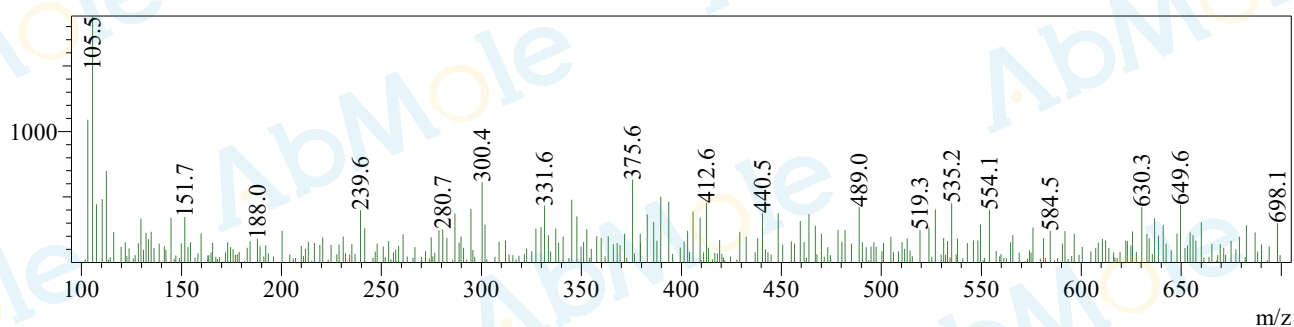
Rt=0.439min 正



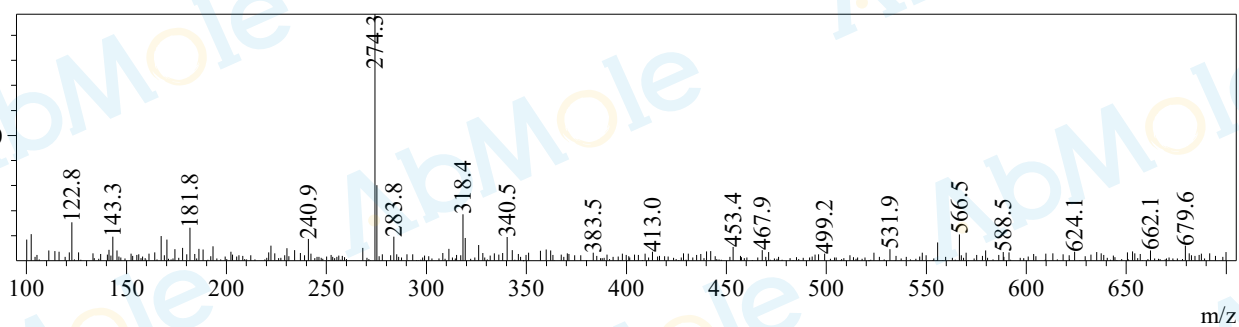
Rt=0.872min 负



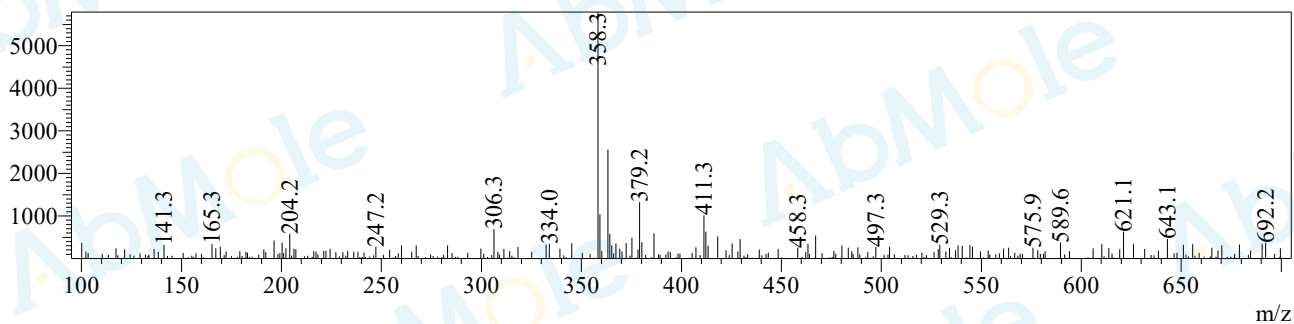
Rt=1.120min 负



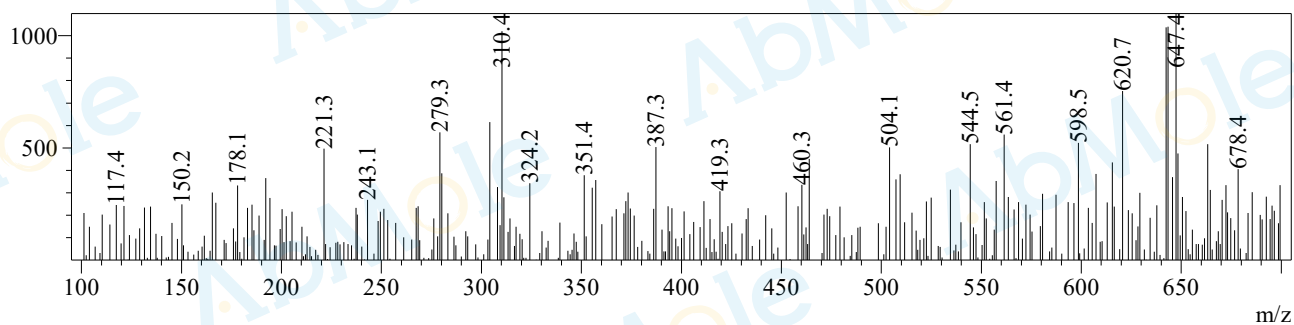
Rt=1.204min 正



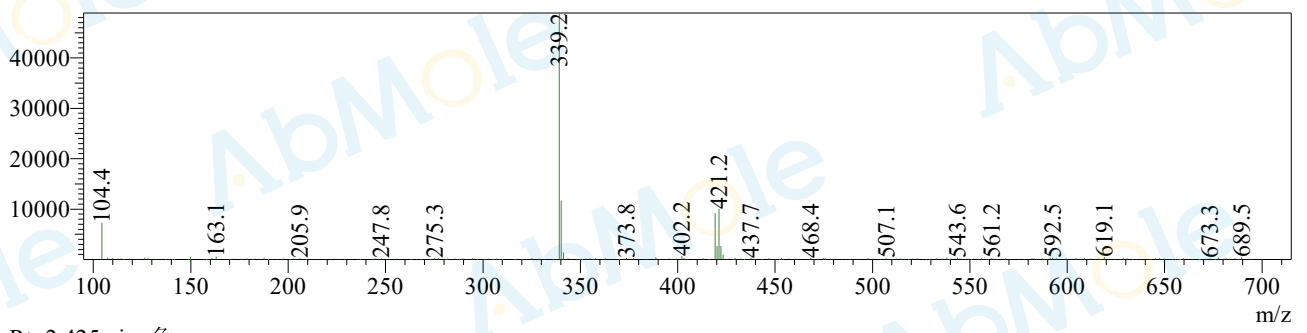
Rt=1.902min 正



Rt=2.059min 正



Rt=2.245min 负



Rt=2.425min 负

